



PARTS CATALOG FOR EK-4 S2 SPORT ARTR

No.6216



GO
EK4
SPORT

**1/8 OFF-ROAD
MONSTER TRUCK**

Manufactured by **THUNDER TIGER CORPORATION**
Distributed in North America by **ACE HOBBY DISTRIBUTORS, INC.**

<http://www.thundertiger.com>
<http://www.acehobby.com>



No.6216-A1

EKA 1/8 OFF-ROAD MONSTER TRUCK
SPORT



No.6216-A2



No.6216-A3

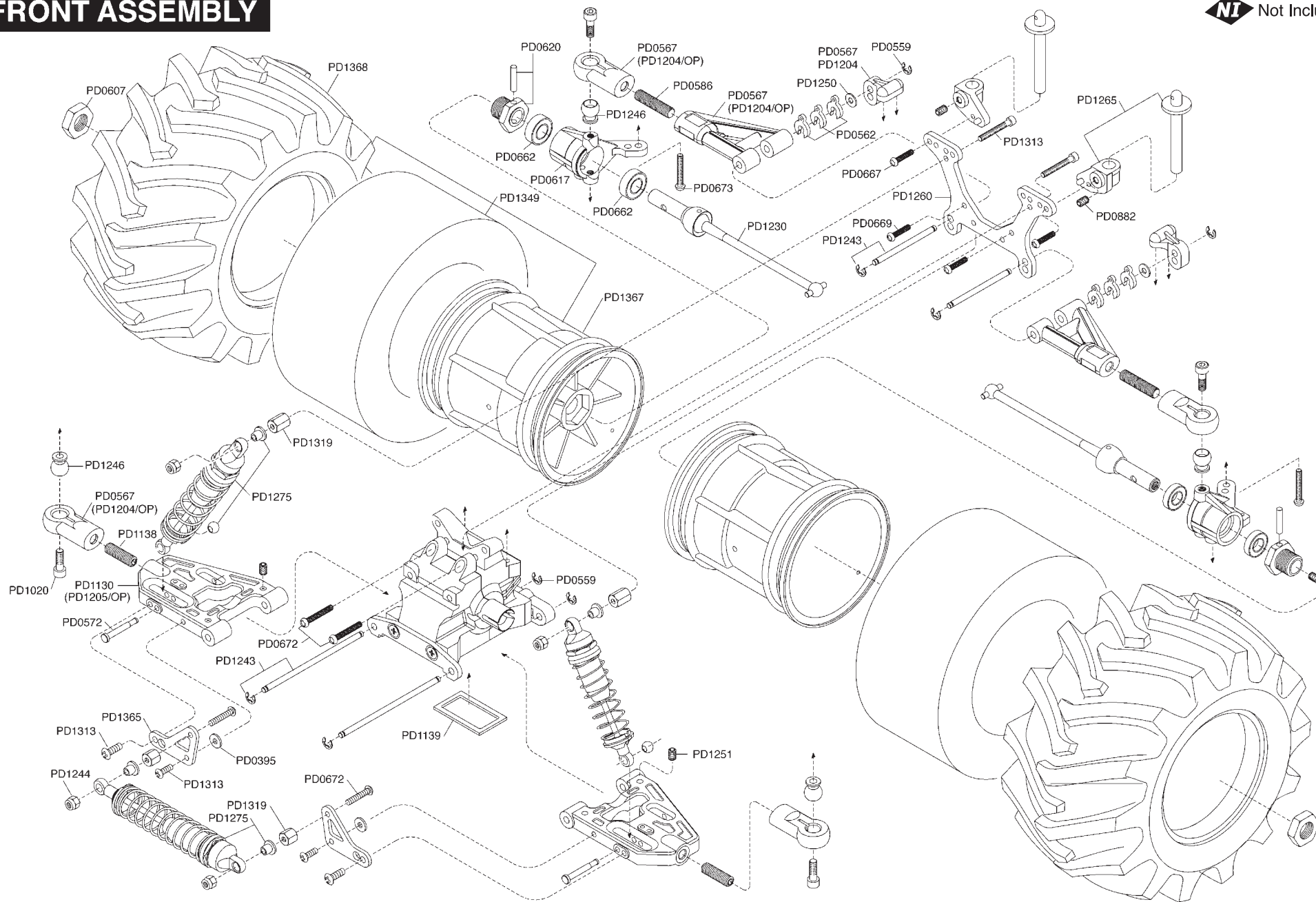
THUNDER TIGER PRO-70BX(R)
ENGINE INCLUDED

Features

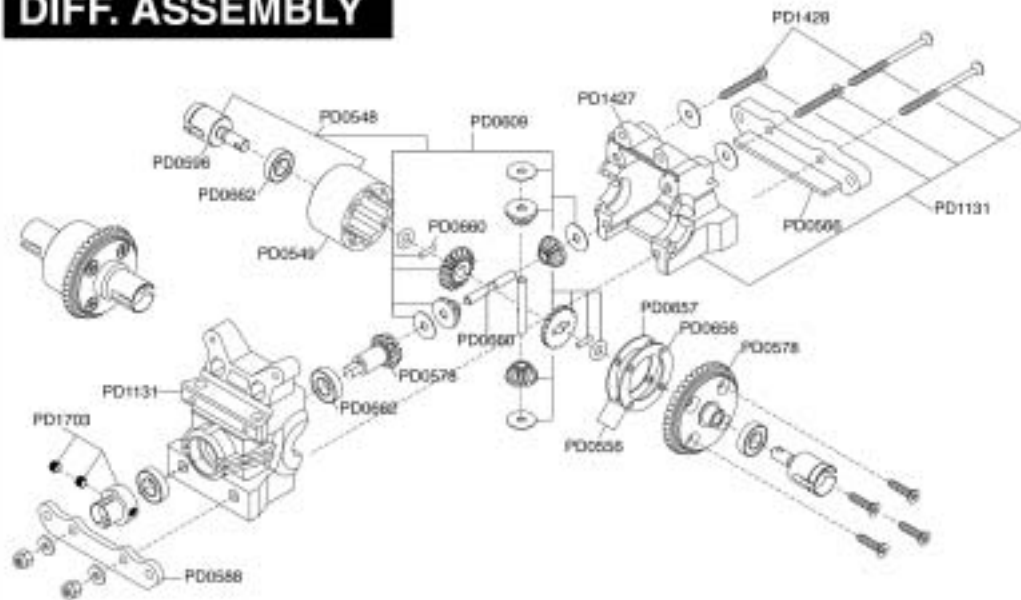
- 1/8 off-road, sport, 4WD truck.
- Fully assembled. Requires radio unit w/ two high torque servos.
- Ford F-350 Heavy Duty Truck body, factory painted.
- PRO-70 high torque engine w/ three needle carburetor.
- High performance manifold & tuned pipe.
- Double layer foam air filter system.
- Rigid chassis with front and side kick-up.
- Composite front/rear chassis stiffeners.
- 7 large, composite shocks (3 front/4 rear).
- Ball joint universal, front.
- Center rigid axle w/ large steel main gear.
- Double disc brake system.
- Durable front/rear differentials.
- Sealed receiver box with quick change battery clip.
- Oversize truck wheels and tires.
- Adjustable rear toe-in plates
- Adjustable front/ rear camber
- Adjustable front caster
- Adjustable wheelbase

FRONT ASSEMBLY

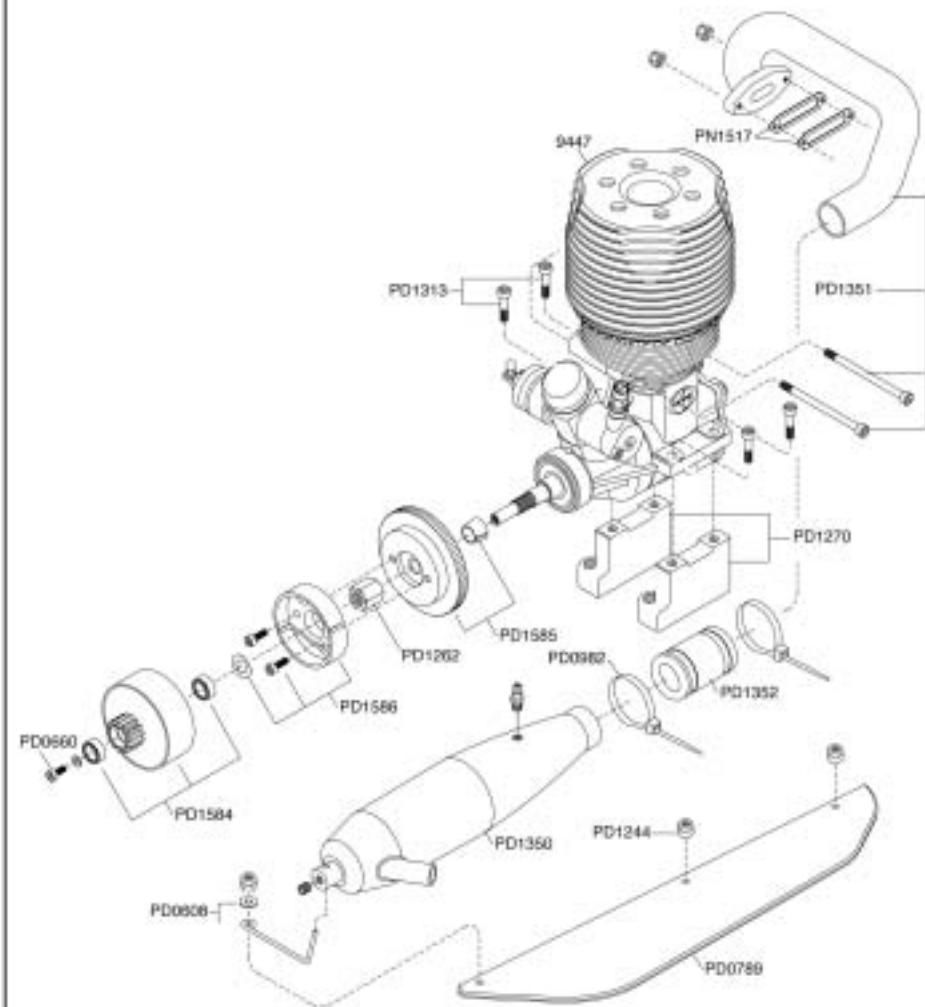
NI Not Included



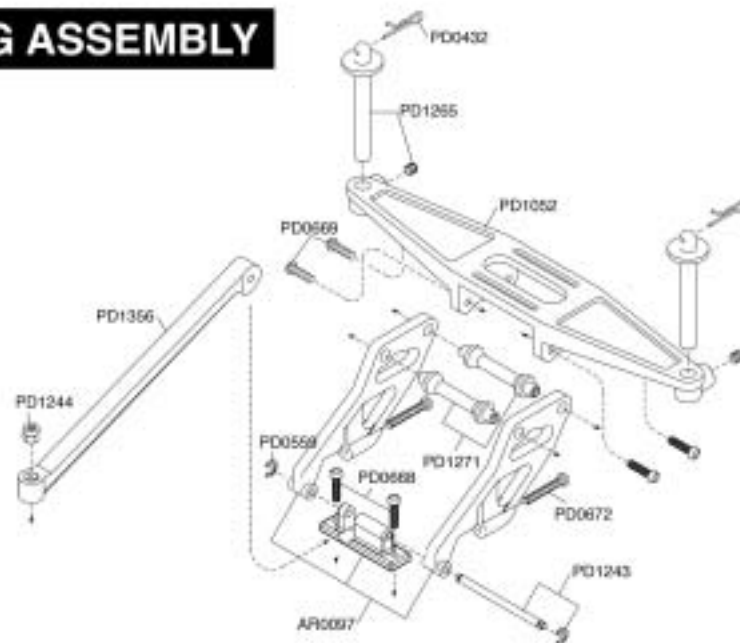
DIFF. ASSEMBLY



ENGINE & CLUTCH ASSEMBLY



TAIL WING ASSEMBLY



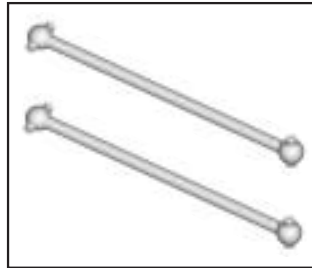
EK-4 S2 PARTS LIST



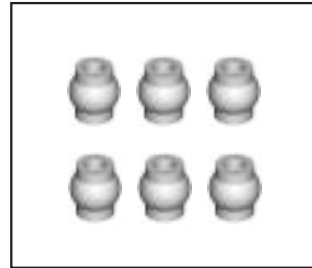
AD0297 SERVO SAVER
TOP PLATE



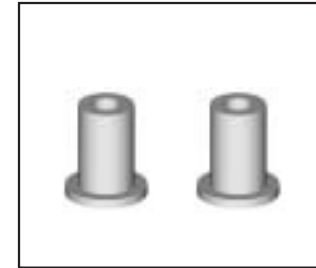
AD0332 REAR SHOCK TOWER



AD0343 REAR DRIVE SHAFT



AD2413 PIVOT BALL (6), 4MM



AD2435 SERVO SAVER
BUSHING



AR0073 FRONT BUMPER



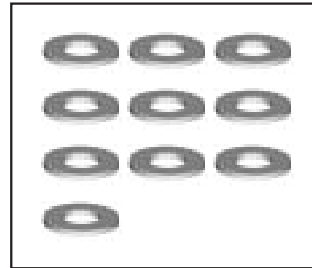
AR0095 REAR HUB CARRIER



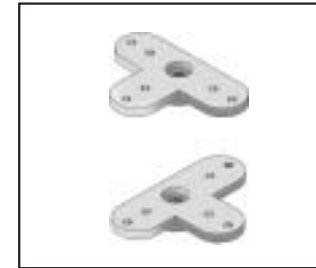
AR0097 BODY / WING MOUNT



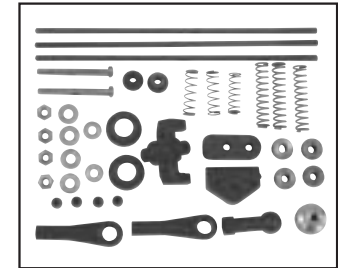
PD0394 WASHER SET (8),
d8 x t3.5mm



PD0395 GASKET SET (10),
d8 x t1mm



PD0405 SERVO ARM SET



PD0406 THROTTLE / BRAKE
LINKAGE SET



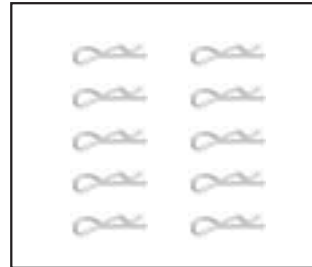
PD0416 BALL BEARING (2),
5 X 10 X 4MM



PD0423 BRAKE CAM / LEVER



PD0425 CTR RIGID AXLE
OUTDRIVE



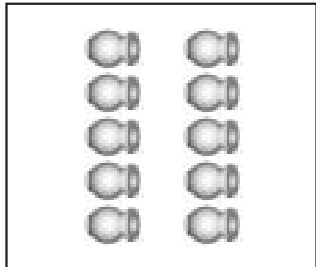
PD0432 1/8 BODY CLIP (10)



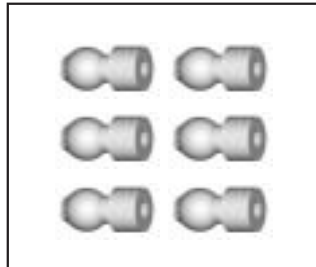
PD0435 REAR AXLE



PD0479 TURNBUCKLE (2),
5 X 60MM



PD0546 STANDOFF BALL (10),
SMALL 4MM



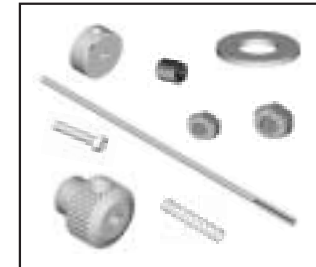
PD0547 STANDOFF BALL (6),
LARGE 4MM



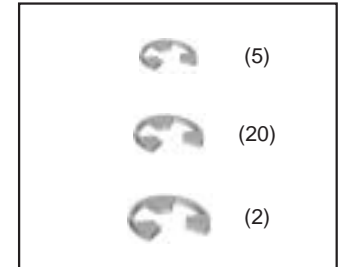
PD0548 FRONT / REAR
DIFFERENTIAL SET



PD0549 DIFFERENTIAL CASE



PD0551 THROTTLE / BRAKE
HARDWARE



PD0559 ASSORTED E-CLIPS
(5)
(20)
(2)